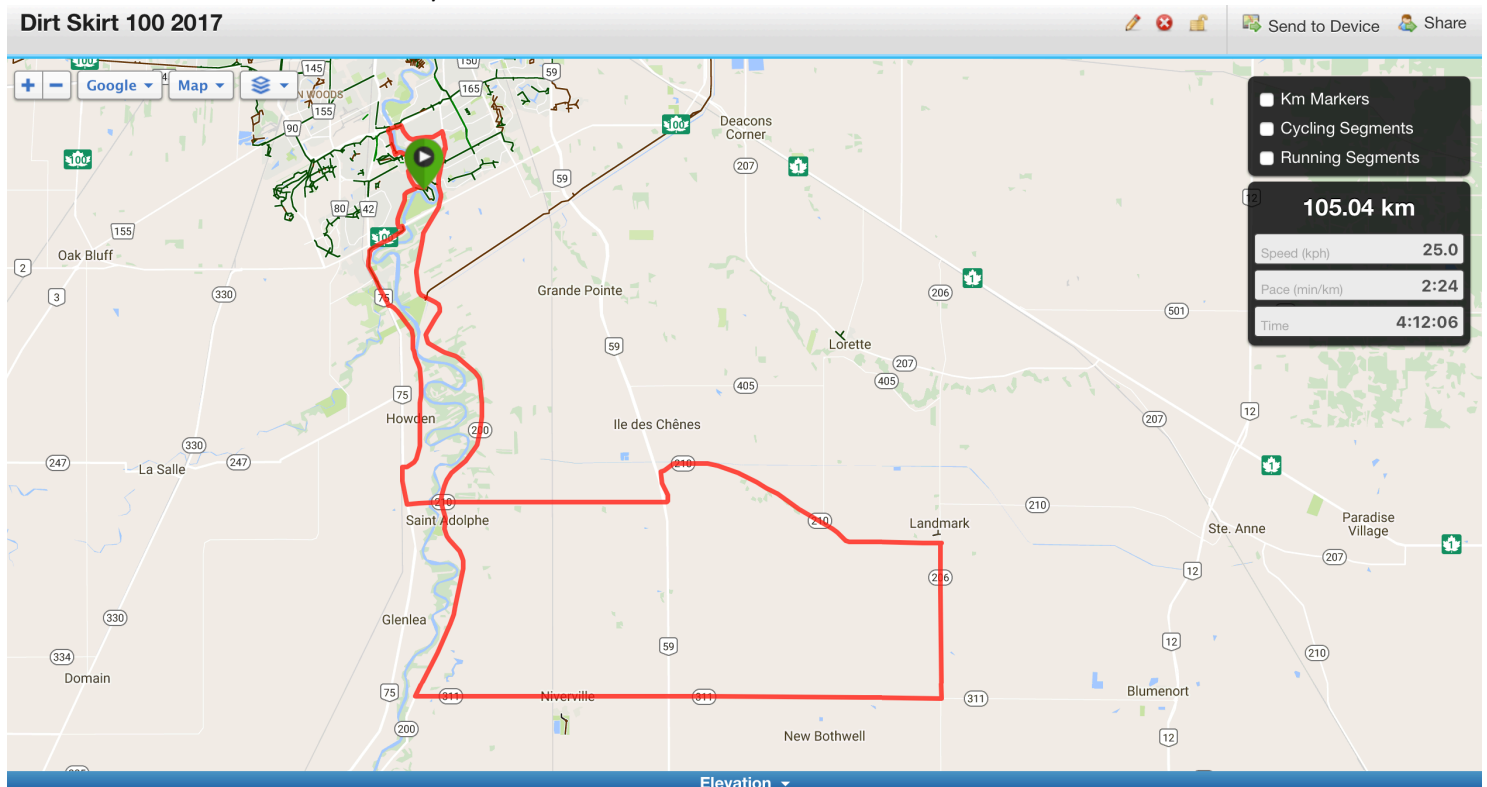


Cue Sheets 100 km – 2017 South/East

Dirt Skirt 100 2017



START – Parking lot of King’s Park -- 198 King’s Drive.

From King’s Park entrance.

Left – onto King’s Drive

Right – Kilkenny Drive (natural bend in road from King’s)

Follow Kilkenny, ride under Perimeter Bridge

Right – Cloutier Drive (or ride bike path that runs parallel to Cloutier)

Left -- Pembina Highway (careful!)

Left – Turnbull Drive which becomes East Red River Drive then Kilburn Rd. (follow till the end)

Left – Highway 75 South – stay on shoulder (careful!)

Left – Highway 210 into St. Adolphe (**20 km into ride**)

Right – Highway 200 – St. Mary’s Rd.

Left – Highway 311 – follow through Niverville (**33 km into ride**)

Here the 100k riders and the 160k riders will split

Left – Highway 206 follow to Landmark **(56 km into ride)**

Left – Highway 210 follow to St. Adolphe **(79 km into ride)**

Right – Highway 200 (St. Mary's) – Cross Perimeter into the City of Winnipeg

Left – River Road – follow to Bishop Grandin Blvd.

Left – Take Bishop Grandin Path on South side of Bishop Grandin. Ride over the Overpass Bridge.

Left – at end of the bridge and follow down to D'Arcy Drive – ride to end of D'Arcy.

Enter old golf course and follow through to University Grounds.

Cross through Q Parking lot at University (do not turn left at Sifton, it is a one way street)

(the Garmin map is wrong here so ignore when it says you are off course)

Left – Dysart Rd. (You should be in front of St. Paul's or St. John's Colleges)

Follow Dysart around the back of the Campus (becomes Saunderson, then Freedman)

Left – King's Drive

Return to King's Park

FINISH: 105 KM